

AMCE

Molded Cone End Seals



APS manufactures full, molded, conical End Seals with easy to read size indicators for versatile installation on a variety of carrier sizes. They are manufactured from 1/8" thick durable, chemical resistant EPDM rubber.

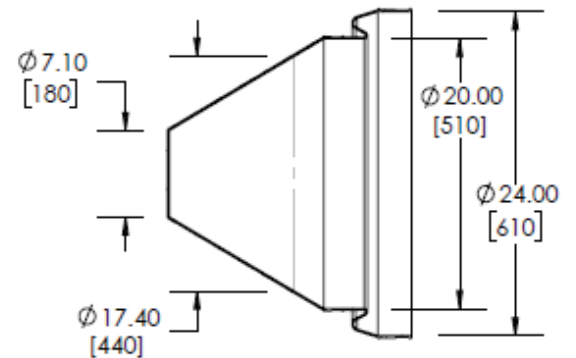
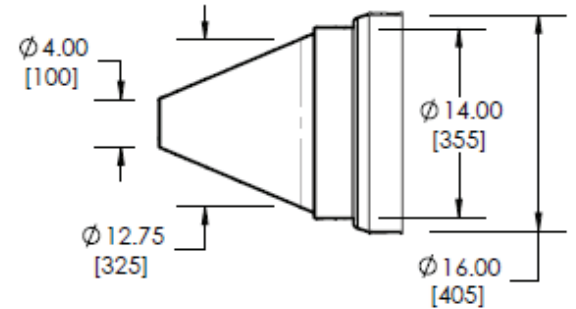
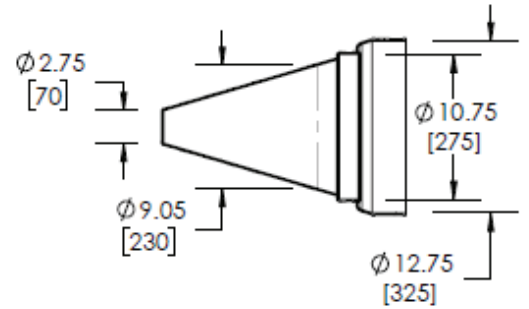
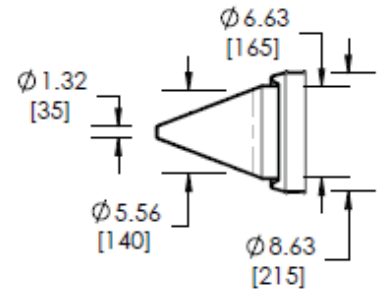
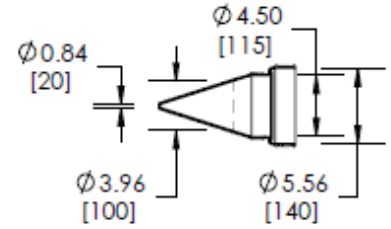
- 5 different sizes available for casings ranging from 4.50" – 24.00" OD and can accommodate carrier sizes from 0.84" – 17.40" OD.
- The closed conical feature allows for low storage cost as each size can cover a range of carriers.
- The cone section of the seal has markings for actual diameter sizes in inches on one side and mm on the reverse. Find your carrier size labeled on the cone and cut-off the end. The carrier will easily slide through the new opening for an easy installation.
- Easily slips over the casing end.
- Each AMCE comes with Stainless Steel band straps that can secure the ends with only a screwdriver.
- After installation, the AMCE prevents the ingress of moisture and debris into your casing annular space without any seams to worry about.
- These end seals are shipped with a closed end, and can be used as a "night cap" over a casing to keep debris or animals out.

AMCE Specifications

Material:	EPDM (60 Durometer)
Thickness:	1/8"
Hardware:	Stainless Steel band with 100% non-magnetic Worm Gear screw
Temperature Limits:	-20 to +230 F
Color:	Black
Tensile Strength:	1800 psi
Elongation:	300%



IPS/DIPS (in)		DN (mm)
0.84		20
1.32		35
1.90	5.56/4.50 (140/115)	50
2.38		60
2.75		70
2.88		75
3.50	8.63/6.63 (215/165)	90
3.96		100
4.00	12.75/10.75 (325/275)	100
4.50		110
4.80		120
5.56	16.00/14.00 (405/355)	140
6.63		170
7.10		180
8.63		220
9.05	24.00x20.00 (610/510)	230
10.75		275
11.10		280
12.75		325
13.20		335
14.00	355	
15.30	390	
17.40	440	



PO Box 60399 • Lafayette, Louisiana 70596-0399
 800-315-6009 • 337-233-6116 • FAX 337-232-3860
 E-Mail: sales@apsonline.com • Website: www.apsonline.com

