



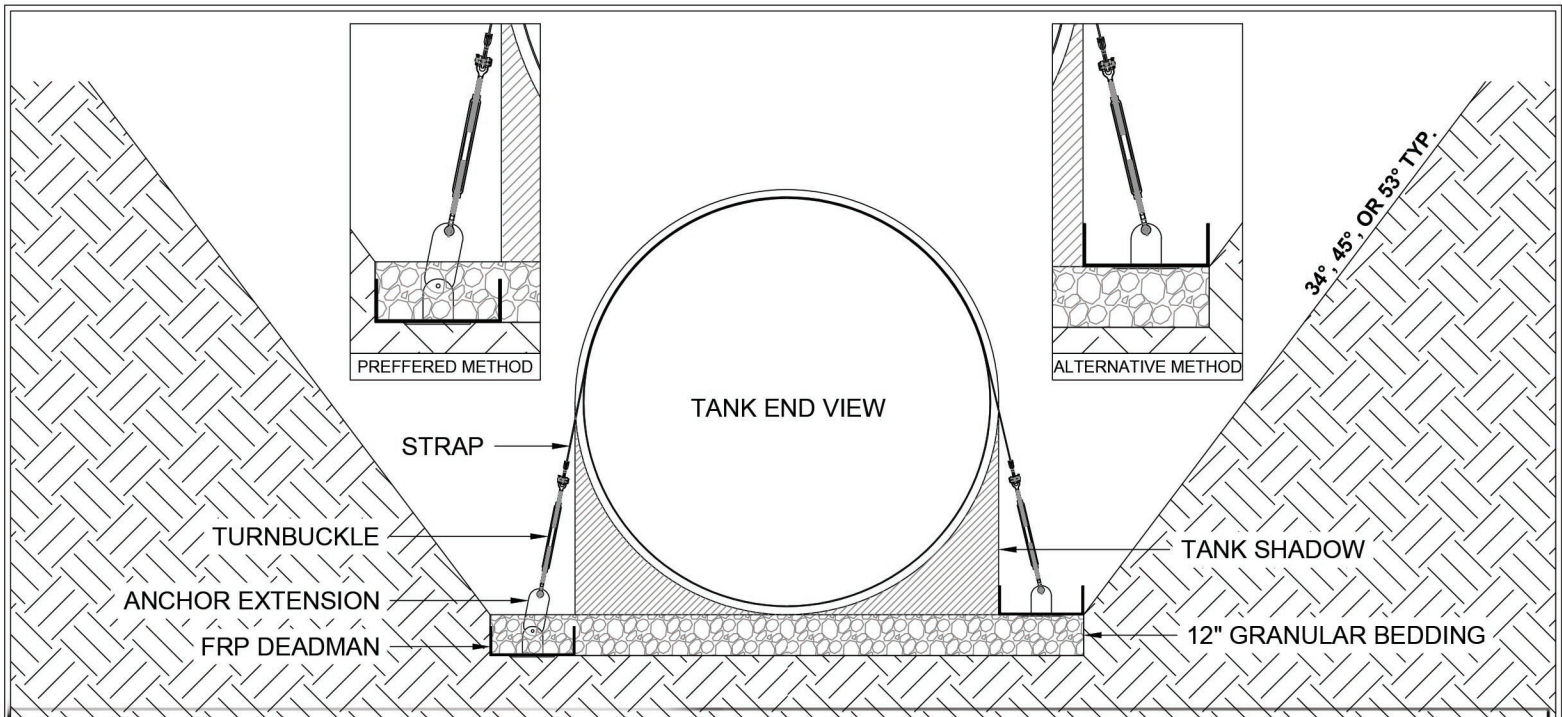
Fiberglass Tank SOLUTIONS



Engineered Fiberglass Deadman System

LIGHTWEIGHT - ENGINEERED STRENGTH

ENGINEERED FIBERGLASS DEADMEN



ANCHORING DIMENSIONS

TANK DIA.	"A"	"B"	"C"	"D"	"E"	"F"
4'	4'-4"	85"	12"	2'-8 1/2"	1'-10 1/4"	0'-4"
5'	5'-4 1/4"	111.5"	12"	3'-2 3/4"	2'-1 1/4"	0'-7"
6'	6'-4 1/4"	145"	12"	3'-8 3/4"	1'-11 1/2"	1'-2 3/4"
8'	8'-4 1/4"	181"	18"	4'-11 3/4"	3'-0 1/2"	1'-1 3/4"
10'	10'-4 1/4"	236"	24"	6'-3 3/4"	3'-4"	1'-10 1/4"
12'	12'-4 1/4"	288"	24"	7'-2 3/4"	3'-8 3/4"	2'-5 1/2"

- NO EXTRA FREIGHT COSTS
- LIGHTWEIGHT
- FLEXIBLE DESIGN